



SEROTINA

HARDEN

contract



L-Shaped Reception / Gallery

C1025-101 / C1032-100 / C59 / C1006-12

Cinnabar Finish



FEATURES

- solid wood construction
- desk / bridge / credenza / hi-rise storage configurations
- File Flex System
- gallery bow front option
- L- or U-shaped units
- tackable hi-res storage and gallery surfaces
- wardrobe units
- electrification option
- transaction surfaces available as straight or radius front in a variety of sizes



Wardrobe

C1053-100
Cinnabar Finish



L-Shaped Reception / Gallery

C1032-101 / C59 / C1025-100 / C1006-12
Cinnabar Finish



ables desks storage b

FEATURES

- solid wood construction
- single-pedestal desks
 - connect to returns and bridges
 - box-box-file drawers
 - center pencil drawer
- double-pedestal desks
 - freestanding
 - box-box-file drawers
 - center pencil drawer
- straight or radius front
- File Flex System

Desk / Wardrobe / Credenza / Hi-Rise Storage

C1000-200 / C1053-200 / C1001-72-26-33-26 / C1002-72-38-63-38 / C1053-100

Cinnabar Finish



Desk (front view)

C1000-200

Champagne Finish



Desk / Bookcase / Credenza w/Kneespace / C1000-100 / C1054-100 / C1001-72-26-X-20 / C60 / Cinnabar Finish



Bullet Top Corner Workstation
C1050-101 / C61 /
C1001-66-X / C68 /
C1051-100 / C1002-72-38-62-38
Cinnabar Finish



P-Top Run-off
C1052-101
Champagne Finish



FEATURES

- solid wood construction
- vertical storage
 - open shelf
 - flipper door
 - wood door
 - optional task lighting
 - optional pile management
- bullet and P-top desking units
 - connects to returns, bridges, credenzas
 - optional bases
- bullet and P-top run-off tables
 - optional bases
- corner connection
 - connects to returns, bridges, credenzas
 - keyboard pullouts
- credenzas
 - freestanding
 - box-box-file or file-file drawers
 - File Flex System
 - single or double door storage
 - optional roll-out shelf
 - optional firesafe component

COVER:

Desk / Bridge / Return

C1020-100 / C1015-048 / C60 /
 C1032-200 / C1002-18-38
 Cinnabar Finish



Bullet Top Run-off

C149-500 / C149-068 /
 C1001-96-X / C68 / C60 / C1001-66-X-20-26 /
 C1002-18-38
 Cinnabar Finish



Conferencing Workstation

Contact factory for specifications
Cinnabar Finish

desksconferencingreception/gallerystorageretu



FEATURES

- solid wood construction
- custom sizes available
- run-off tables
- electrical/data stations available
- visual board
- optional edge details
- tops can be specified as any size or shape to fit conference configurations

urn and more conferencing tables wardrobes bridges

FEATURES

- solid wood construction
- vertical storage
 - open shelf
 - flipper or wood door
 - optional task lighting
 - tackable surface
 - optional pile management system
- credenzas
 - freestanding
 - box-box-file or file-file drawers
 - File Flex System
 - single and double door storage
 - optional roll-out shelf
 - optional firesafe component
- files
 - available as two or four drawer high
- bookcases
 - available as two or four shelf

Lateral File

C1056-100
Cinnabar Finish



Lateral Files / Hutch

C1001-36-37 / C1002-36-62
Cinnabar Finish

ption storage bookcases lateral files wardrobes des



Lateral Files / File-File

C1001-54-37-26
Cinnabar Finish



smartCOMM™ Conferencing Table

C146-800 / C95
Brandywine Finish



Visual Board

C1057-100
Champagne Finish



Data Port

C93
Brandywine Finish



Black Interport

C94-200
Brandywine Finish



smartCOMM™ Power and Communications Unit

C95
Brandywine Finish



Custom Crescent Column Base Conference Table

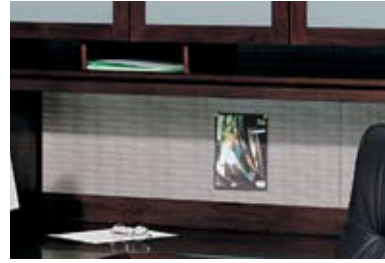
C146-703 / Chamfered Edge
Cinnabar Finish

standard

- solid cherry wood construction
- standard finish selections
- catalyzed lacquer
- solid cherry drawer fronts
- four-corner dovetail drawer construction
- wooden pencil tray in top desk drawers
- Accuride® suspensions
- File Flex System allows for front-to-back and side-to-side, legal or letter filing
- tackable surface on vertical storage and receptionist gallery units
- construction options and unit modifications available on most units



Standard Center Desk Drawer Construction



Tackable Surface

available on vertical storage and receptionist gallery units



C65 1/2 Rectangular Black Grommet

solid zinc casting with matte black powder-coated finish.



C51 Metallic Blonde Hardware

solid zinc castings with metallic blonde powder-coated finish.

Standard Matte Black Hardware

solid zinc casting with matte black powder-coated finish.

storage features options storage returns bridges cre

available

- task lighting for work surfaces
- electronic/data port options
- keyboard and mouse platform options
- electrification and wire management options
- privacy walls
- metallic blonde hardware option
- matte black hardware option
- brushed steel hardware option
- Global Resistovar finish
- slat-wall storage
- finished backs for open workspaces



C73 Wire Management / Electrification Option
may be specified in any desk, bridge, return or credenza



C97 Deluxe Data Port Option
may be specified in any desk, bridge, return or credenza



C59 Articulated Keyboard
fully articulated keyboard arm with adjustable metal keyboard clamp and black foam wrist rest



C60 Articulating Keyboard / Mouse Platform
fully articulated keyboard arm with wood platform and leather wrist rest — accommodates enhanced keyboard



C60 1/2 Articulated Keyboard
fully articulated keyboard arm with wood platform and leather wrist rest



C1002-67 Finished Full Back Panels
intended for use on units placed in open workspace layouts.



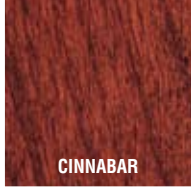
C94-200



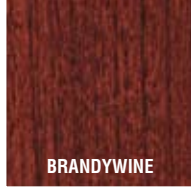
CHAMPAGNE



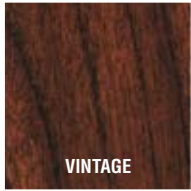
ESTATE



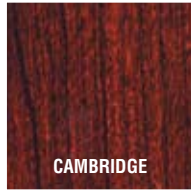
CINNABAR



BRANDYWINE



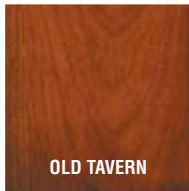
VINTAGE



CAMBRIDGE



wood finishessolidwoodcraftsmanshipsolidw



OLD TAVERN

- certified by Sustainable Forestry Initiative (SFI®)
- floating-panel construction
- dovetail drawer construction
- custom-fit assembly
- hand-carving and detailing



Participant in the American Forest & Paper Association's SFI® program

HARDEN contract

HARDEN FURNITURE CONTRACT DIVISION / Harden Furniture, Inc.

8550 Mill Pond Way ■ McConnellsville, NY 13401-0002

315 / 675-3600 ■ Fax 315 / 245-2884

contract@harden.com ■ www.hardencontract.com

